



SRI GVG VISALAKSHI COLLEGE FOR WOMEN (Autonomous)

Affiliated to Bharathiar University

Accredited at \mathcal{A}^+ Grade by NAAC (4th Cycle)

An ISO 9001:2015 Certified Institution

Udumalpet - 642 128



Power Generation through Renewable Energy Sources

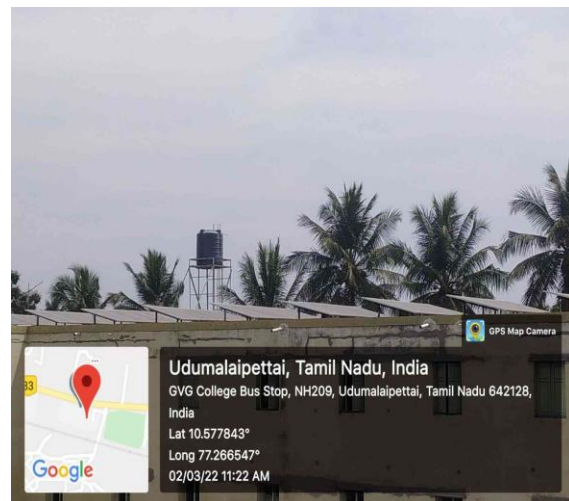
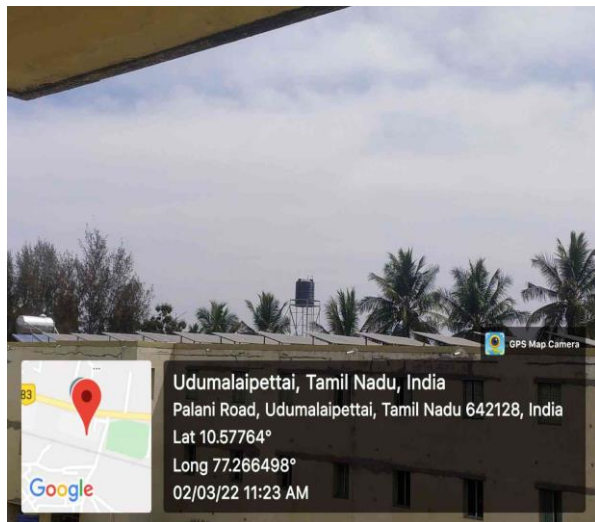
7.1.2 Power generation for the institution through renewable energy sources - Solar Panels

Two Solar heaters support four tanks with a total capacity of 8000 Lts.

Solar Power Plant:

Padmam Block has solar power plant of 27KW capacity. The inverter capacity is 12 KVA. Maximum safe current drawing capacity is 60Amps from battery backup. The solar power plant generates 250V as 108 Amps. The inverter charger capacity is 40A. Useful energy storage is 53units. The power plant is able to generate 121KWH.

Annam Block has solar power plant of 16.2 KW capacity. The inverter capacity is 6 KVA. Maximum safe current drawing capacity is 25Amps from battery backup. This solar power plant generates 250V as 64 Amps. The inverter charger capacity is 20A. Useful energy storage is 27units. The power plant is able to generate 73KWH.





LED Light



